

Roset & associates

P.O. Box 10234
Bozeman, MT 59719



Project Profile

2006 Parade of Homes Entry

Project Specifications:

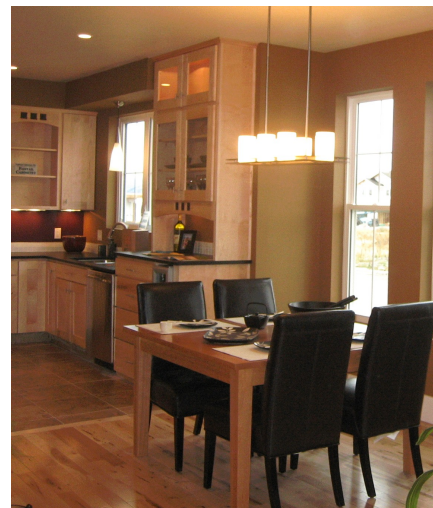
2375 Square Feet

Completion Time:
180 Day from Design to Completion

Location:
4205 Benepe Street
Bozeman, MT 59718
Valley West Subdivision

Roset and Associates consistently meets and exceeds construction objectives as set by the client. Completing projects on-time and within budget demonstrates a commitment to delivering the highest possible value.

The 2006 Parade of Home Entry demonstrates Roset and Associates ability to appreciate and work within a strategy for success. By advocating that relationships are based on commitment and communication, Roset and Associates allows you to focus on what you do best day-to-day, without the worry of supervising construction.



Contact Eric Roset Directly:

406.581.5634